

MEET VIPAL'S SOLUTIONS FOR THE MINING INDUSTRY



WORLD REFERENCE

Vipal offers the best solutions for the mining sector: High quality rubber compounds for **tyre retreading** and a complete line of **products for tyre repair**, helping to reduce time in equipment maintenance and to optimise their productivity. There are several factors that make Vipal a reference company worldwide:



HIGH PRODUCTION CAPACITY

Count on the experience of a company with a tradition of **over 45 years** in the search of quality and innovation in rubber. With **4 plants**, 3000 employees, **an industrial park of over 183,000 m²** and a **production capacity of 228,000 tons/year**, Vipal has an excellent machinery for all types of demands in all continents.



CUTTING-EDGE LABORATORIES

Vipal's R&D laboratories, in addition to relying on **traditional equipment**, such as tensiometers, rheometers, viscometers, RPA, ozone chamber, have **equipment for materials characterisation by instrumental analysis** (DSC, DMA, Chromatography (GS-MS and HPLC), FTIR, Electronic Microscopy, etc.) and a pilot plant with mixing and vulcanisation equipment.

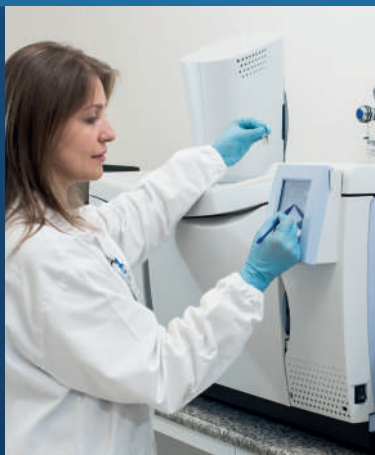


QUALITY CONTROL

Since 1995, Vipal has ISO 9000 series certifications and today takes pride in having the ISO 9001:2015 Certification. This way, we make our quality to be recognised worldwide, as one of our main elements of distinction.

In the industrial processes that involve mining, one of the critical aspects is the abrasive wear of the equipment and pipelines generated by the handling and transport of mining. With the aim of **reducing abrasive wear**, Vipal Rubber products act basically as coatings, that contribute to:

- Extend the useful life of the equipment and pipelines
- Reduce the downtimes for equipment maintenance
- Improve operational management
- Increase competitiveness and the benefits to the mining sector



RUBBER COMPOUNDS

We have placed our **entire structure and experience** of over 45 years to the service of your demands.

How? We conduct a **complete evaluation** of your needs, considering all the factors that influence performance. This way, we can indicate the most adequate compound for your application.

Even if it needs a **differentiated formula**, for a specific demand, we can develop a special compound to directly satisfy your needs.

DELIVERY FORMS

Choose how you want to receive your compound:



Strips



Sheet

PATCH LINE

- **Earthmover RAC Patches** - They are made of nylon ply layers which follow the same direction as the tyre casing plies, especially designed for radial OTR tyres. This line is available in the cold system and floated with a cushion gum/bonding rubber to convert for the hot system.

- **RA (Radial Aramid) Patches** - They are made of aramid plies which follow the same direction as the construction of the radial tyre casing plies. Having less plies, it becomes lighter and more flexible, yet resulting the same resistance compared to patches of same application.

Earthmover Rac Patches



RA (Radial Aramid) Patches



VIPAL INDUSTRIAL LINE

VIPAFIX EXTRA STRONG CEMENT

The Vipafix Extrastrong Cement meshes via metal oxides, **adhering and gluing the materials**. Its antioxidants offer protection against aging caused by oxygen, ozone and weather.



VIPAFIX CATALYST

The Vipafix Catalyst **intensifies Extrastrong Vipafix Cement cristallisation** and the bonded surface's heat resistance. Available in 30 and 60 minute versions, enables programmed equipment shutdowns, **reducing maintenance service time and costs**.



BUFFPAL ACTIVATOR FOR RUBBER SURFACES

This cleaner is excellent for **removing grease from metal and rubber surfaces**, eliminating impurities which impair adhesion.





VIPAL RUBBER

Phone: +55 51 3205-3050

sales@vipal.com | www.vipal.com